



NAT OPS BULLETIN

Serial Number: **2017_001_Revision 04¹**

Subject: NAT common DLM AIC

Originator: NAT SPG

Issued: **09 July 2019**

Effective: **09 July 2019**

The purpose of North Atlantic Operations Bulletin 2017_001_Revision 04 is to provide guidance to North Atlantic (NAT) operators to prepare them for Phase 2C of the North Atlantic Data Link Mandate (NAT DLM).

Any queries about the content of the attached document should be addressed to: ICAO EUR/NAT Office: icaoearnat@paris.icao.int

¹ This NAT OPS Bulletin supersedes Serial Number: 2017_001_Revision 03.

NOTICE

NAT Ops Bulletins are used to distribute information on behalf of the North Atlantic Systems Planning Group (NAT SPG). The material contained therein may be developed within the working structure of the NAT SPG or be third party documents posted at the request of a NAT SPG Member State. A printed or electronic copy of this Bulletin, plus any associated documentation, is provided to the recipient as is and without any warranties as to its description, condition, quality, fitness for purpose or functionality and for use by the recipient solely for guidance only. The information published by ICAO in this document is made available without warranty of any kind; the Organization accepts no responsibility or liability whether direct or indirect, as to the currency, accuracy or quality of the information, nor for any consequence of its use. The designations and the presentation of material in this publication do not imply the expression of any opinion whatsoever on the part of ICAO concerning the legal status of any country, territory, city or area of its authorities, or concerning the delimitation of its frontiers or boundaries.

The NAT OPS Bulletin Checklist is available at www.icao.int/EURNAT/EUR & [NAT Documents](#), [NAT Documents](#), then [NAT Ops Bulletins](#).

There is no objection to the reproduction of extracts of information contained in this Bulletin if the source is acknowledged.

NOTICE OF PLANNED EXPANSION OF MANDATE FOR DATA LINK SERVICES IN THE NORTH ATLANTIC REGION

Introduction

The first phase of the mandate for data link services in the North Atlantic (NAT) Region commenced on 7 February 2013. As of that date, all aircraft operating on or at any point along two specified tracks within the NAT organized track system (OTS) between flight level (FL) 360 to FL 390 (inclusive) during the OTS validity period are required to be fitted with, and using, controller-pilot data link communications (CPDLC) and Automated Dependent Surveillance-Contract (ADS-C) equipment.

As notified in State letter EUR/NAT 12-0003.TEC (dated 04 January 2012), Phase 2 of the mandate began on 5 February 2015.

Purpose of Circular

This common NAT Aeronautical Information Circular (AIC) outlines the plan for Phase 2 of the NAT Data Link Mandate (DLM). As detailed below, Phase 2 is planned to be implemented in three steps (2A, 2B and 2C), commencing on 5 February 2015, 7 December 2017 and 30 January 2020, respectively. This AIC also provides information on the expanded vertical and horizontal boundaries of NAT DLM airspace, policy for flight planning into NAT DLM airspace and NAT DLM operating policies.

Background

As concluded at the forty-ninth meeting of the North Atlantic Systems Planning Group (NAT SPG), the objectives of the NAT DLM are to enhance communication, surveillance and air traffic control (ATC) intervention capabilities in the NAT region, in order to reduce collision risk and enable the NAT target level of safety to be met, particularly in the vertical plane. ADS-C provides capabilities for conformance monitoring of aircraft adherence to cleared route and FL, thereby significantly enhancing safety in the NAT region. ADS-C also facilitates search and rescue operations and the capability to locate the site of an accident in oceanic airspace. CPDLC significantly enhances air/ground communication capability and therefore controller intervention capability.

The NAT SPG goals for the expansion of the NAT DLM to increase the level of aircraft data link system equipage, are in concert with the International Civil Aviation Organization (ICAO) Global Air Navigation Plan (GANP) (Doc 9750) Aviation System Block Upgrade (ASBU) Block 0, Module B0-TBO. This module calls for safety and efficiency improvements for enroute operations supported by data link. The NAT SPG objectives are that by 2018, 90% of aircraft operating in the NAT Region airspace at FL 290 and above will be equipped with Future Air Navigation Systems 1/A (FANS 1/A) ADS-C and CPDLC systems and that by 2020, 95% of aircraft operating in that airspace, will be so equipped.

Planned Vertical and Horizontal Boundaries for NAT Region DLM Airspace

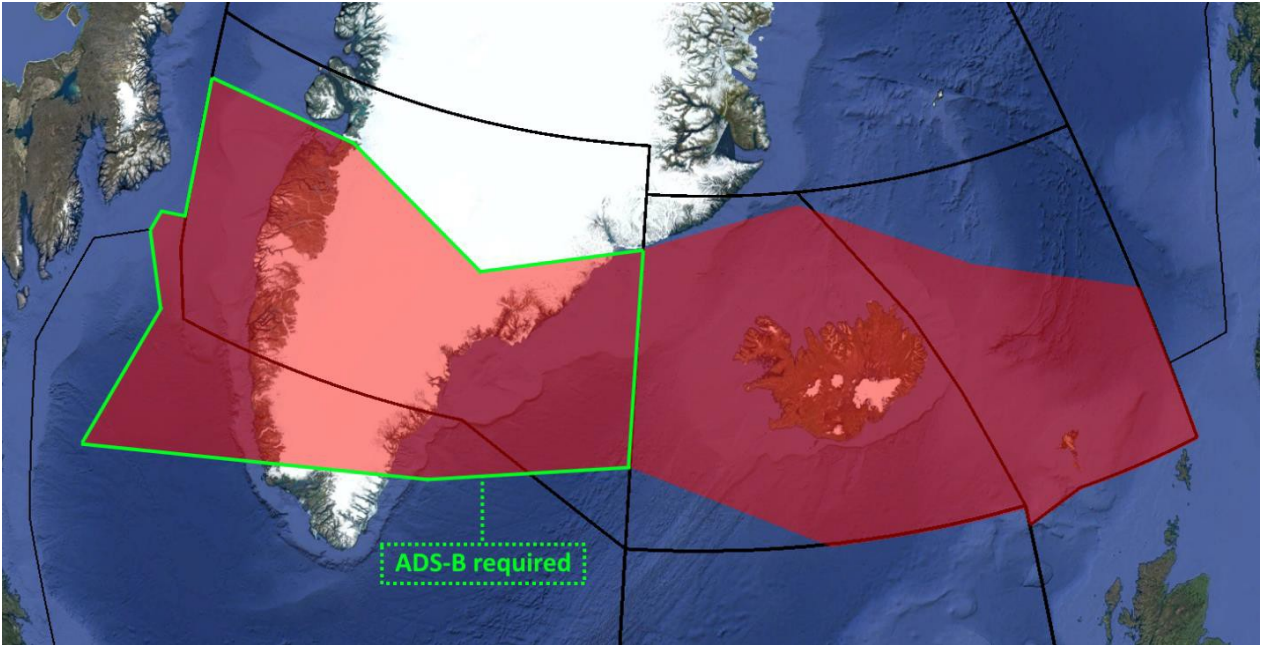
- Phase 2A, commenced 5 February 2015: FL 350 to FL 390 (inclusive) all tracks within the NAT OTS. This phase applies to all aircraft operating on or at any point along the tracks;
- Phase 2B, commenced 7 December 2017: FL 350 to FL 390 (inclusive) throughout the ICAO NAT region;
- Phase 2C, commencing 30 January 2020: FL 290 to FL 410 (inclusive) throughout the ICAO NAT Region.

Airspace Not Included in NAT Region DLM Airspace

- Airspace north of 80° North (N). (Airspace north of 80°N lies outside the reliable service area of geostationary satellites);
- New York Oceanic East flight information region (FIR);
- Airspace where an ATS surveillance service is provided by means of radar, multilateration and/or ADS-B, coupled with VHF voice communications as depicted in State Aeronautical Information Publications (AIP), provided the aircraft is suitably equipped (transponder/ADS-B extended squitter transmitter);
- Specific areas as agreed through the NAT SPG and specified below:
 - a) the implementation of the NAT DLM Phase 2B goes ahead on 7 December 2017 except for non-DLM equipped aircraft that are allowed to operate on:
 - i. T9 and T213 until solutions to provide ATS surveillance and VHF services (eventually moving T213 to the east in order to be fully covered) are implemented, after which time the NAT DLM would no longer be applicable in this airspace. This implementation will be achieved as early as possible but no later than 30 January 2020; and
 - ii. T13, re-aligned T16 and T25 until 30 January 2020
 - b) there will be no other changes to the applicability of Phase 2B and that the date of implementation of Phase 2C remains on 30 January 2020.

Note 1: the aircraft operators using Tango routes within the NAT DLM area of applicability will either complete their fleet upgrades by January 2020 or will not be allowed to operate in that volume of airspace.

Note 2: Whenever an Organised Track infringes Tango Route(s), the North Atlantic Data Link Mandate applies within the level band FL 350 to FL 390 inclusive, for that portion of the route infringed, during the Organised Track System times (i.e. 0100z to 0800z and 1130z to 1900z). This procedure, applied during the NAT DLM Phase 2A, will remain in force during the NAT DLM Phase 2B.

CHART 1. GUIDANCE FOR TRANS-ATLANTIC FLIGHT PLANNING BY NON-DATALINK AIRCRAFT

For planning purposes, this area is bounded by the following:

Northern boundary: 65N000W - 67N010W - 69N020W - 68N030W - 67N040W - 69N050W - 69N060W - BOPUT.

Southern boundary: GUNPA (61N000W) - 61N007W - 6040N010W - RATSU (61N010W) - 61N020W - 63N030W - 62N040W - 61N050W – SAVRY

Aircraft not equipped with FANS 1/A (or equivalent) systems will be allowed to operate within this area at DLM designated flight levels, provided the aircraft is suitably equipped (transponder/ADS-B extended squitter transmitter).

CHART 2. ESTIMATED EXTENT OF ATS SURVEILLANCE AIRSPACE IN THE NAT REGION

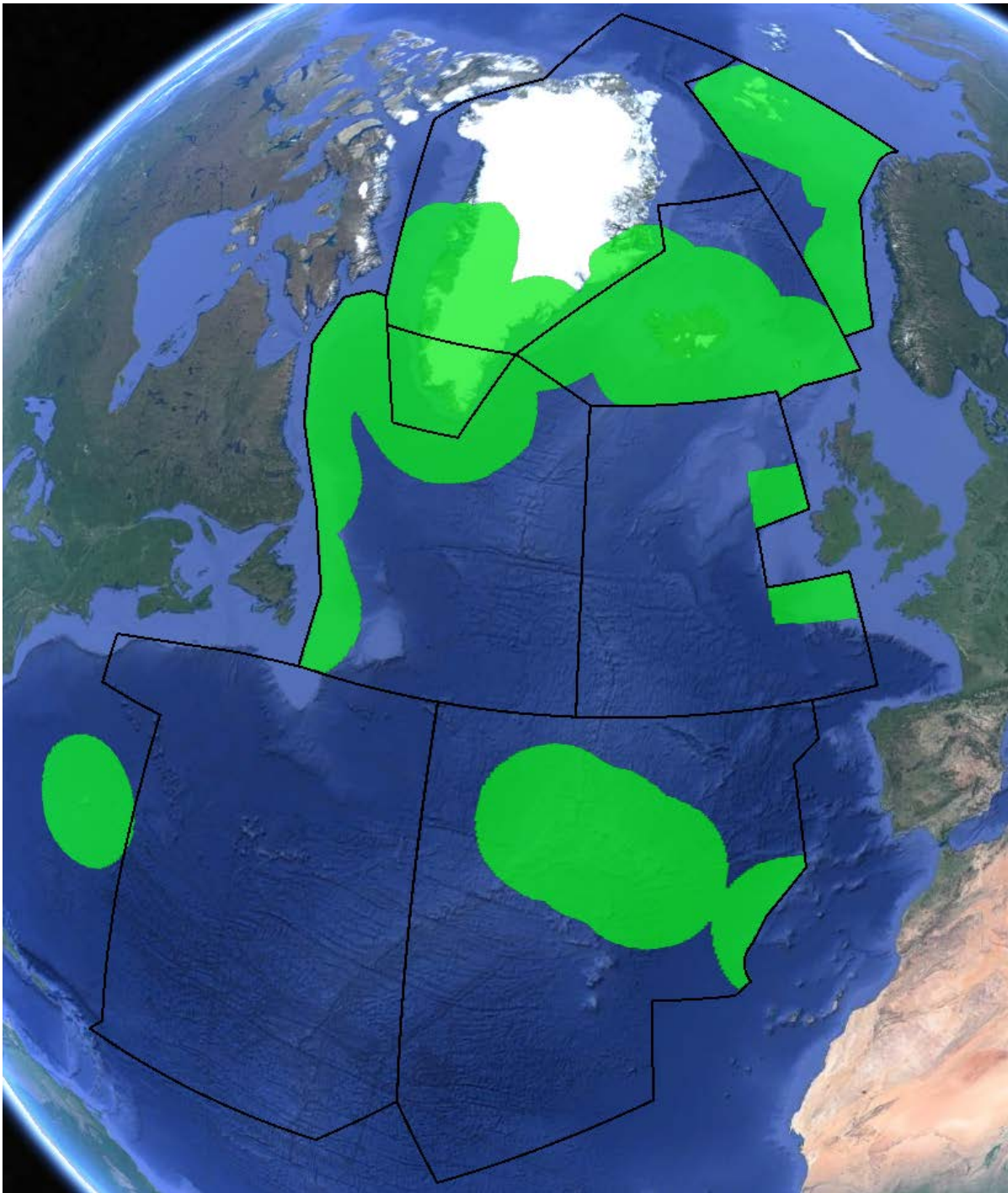
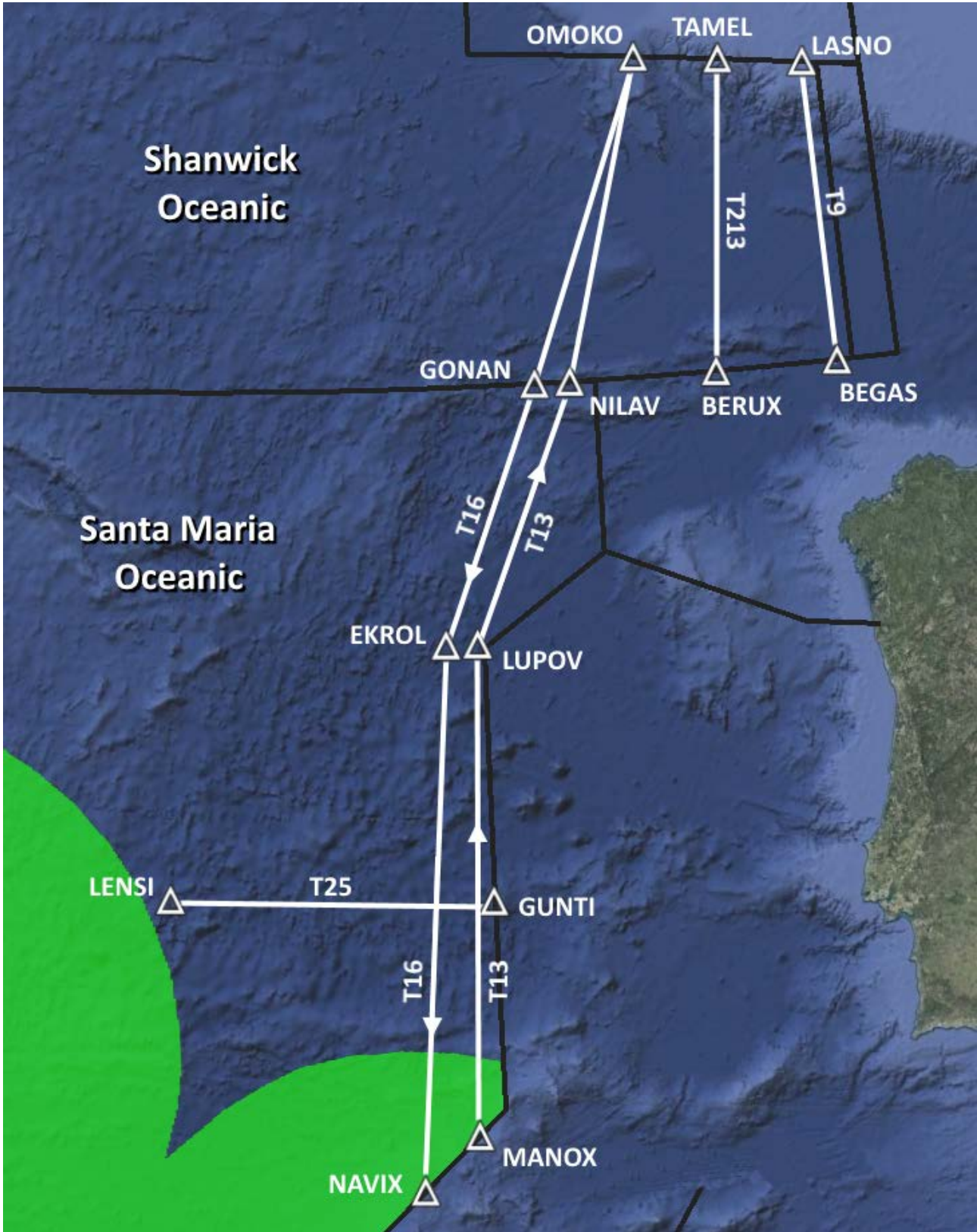


CHART 3. TANGO ROUTES IN THE NAT AIRSPACE WHERE DLM PHASE 2B WAS POSTPONED UNTIL 30 JANUARY 2020



Flights Allowed to Flight Plan into NAT Region DLM Airspace

The following flights will be permitted to flight plan to enter the NAT DLM airspace:

1. Flights equipped with and prepared to operate FANS 1/A (or equivalent) CPDLC and ADS-C data link systems. (NAT Regional Supplementary Procedures (ICAO Doc 7030) paragraphs 3.3.2 and 5.4.2 apply for CPDLC and ADS-C respectively); and
2. Non-equipped flights that file STS/FFR, HOSP, HUM, MEDEVAC SAR, or STATE in Item 18 of the flight plan. (Depending on the tactical situation at the time of flight, however, such flights may not receive an ATC clearance which fully corresponds to the requested flight profile).

Operational Policies Applicable To NAT Region DLM Airspace

Any aircraft not equipped with FANS 1/A (or equivalent) systems may request to climb or descend through the NAT DLM airspace. Such requests, as outlined below, will be considered on a tactical basis.

- Altitude reservation (ALTRV) requests will be considered on a case by case basis (as is done today regarding NAT minimum navigation performance specifications [MNPS] airspace), irrespective of the equipage status of the participating aircraft.
- If a flight experiences an equipment failure **AFTER DEPARTURE** which renders the aircraft unable to operate FANS 1/A (or equivalent) CPDLC and/or ADS-C systems, requests to operate in the NAT DLM airspace will be considered on a tactical basis. Such flights must notify ATC of their status **PRIOR TO ENTERING** the airspace.
- If a FANS 1/A data link equipment failure occurs while the flight is **OPERATING WITHIN NAT DLM AIRSPACE**, ATC must be immediately advised. Such flights may be re-cleared so as to avoid the airspace, but consideration will be given to allowing the flight to remain in the airspace, based on tactical considerations.
- If a flight experiences an equipment failure **PRIOR** to departure which renders the aircraft non-DLM compliant, the flight should re-submit a flight plan so as to remain clear of the NAT regional DLM airspace.

European/North Atlantic (EUR/NAT) Interface Flight Planning

Where the NAT interfaces with the EUR data link implementation rule airspace, procedures will be established by the air navigation service providers (ANSP) concerned to facilitate the vertical transition of traffic to and from the NAT region DLM and the EUR data link implementation rule areas. The transition will be conducted as soon as is practicable by the initial EUR domestic area along the common FIR / upper flight information region (UIR) boundary bordering the NAT region DLM. The operator and the ANSP shall ensure that the vertical transition is complete prior to crossing any subsequent FIR/UIR boundary.

Further Information

For further Information, please contact icaoournat@paris.icao.int and consult AIPs of NAT provider-States.

-END-